



FALL 2011

# cozy wrap *bathrobe*

PATTERN

by **BONNIE FERGUSON**

Project photo on page **37**; instructions on page **79** of *Stitch* Fall 2011.

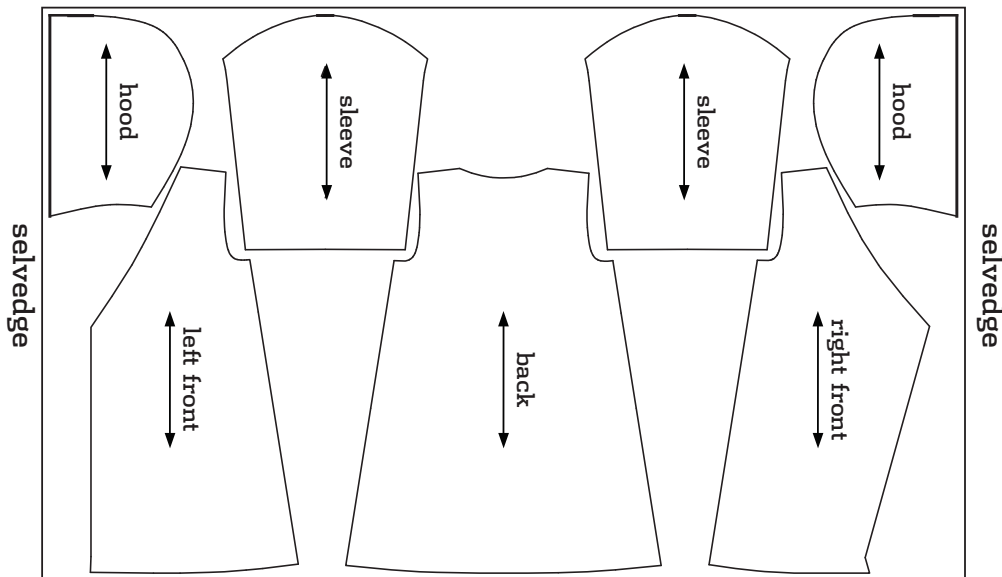
Bundle up your little one in cozy comfort with this wrap bathrobe made with French terry. Fold-up cuffs, adjustable ties, and a generous hood allow the robe to grow as your child grows.



60" (152.5 cm)

main

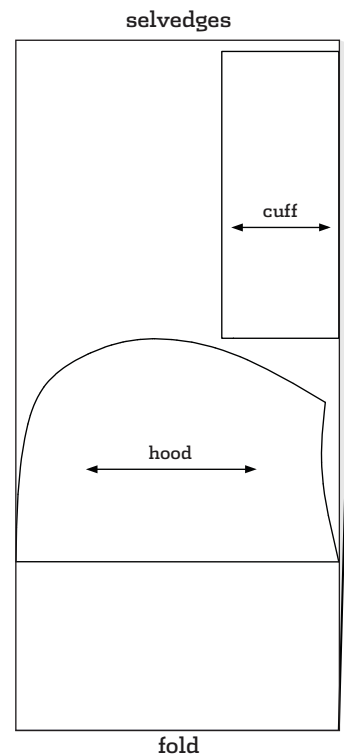
2T-4T



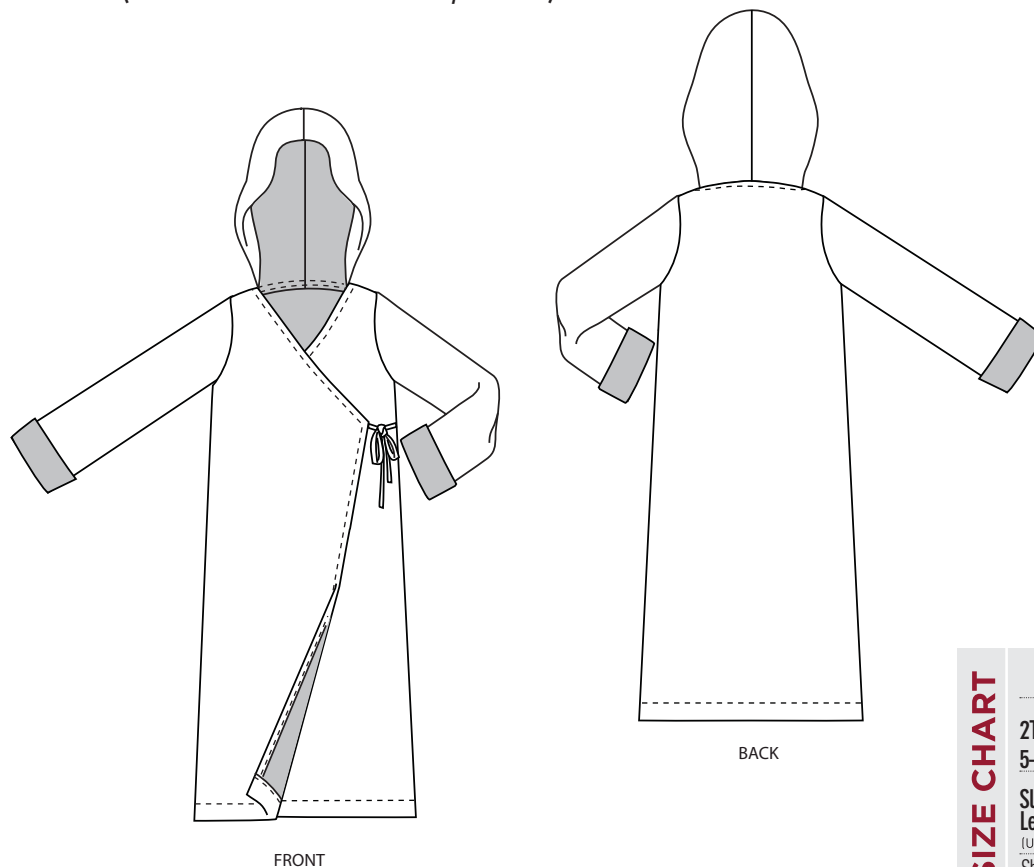
60" (152.5 cm)

contrast

2T-4T, 5-6



Please note: Grainlines should run perpendicular to the direction of most stretch (the direction of most stretch is usually crosswise)

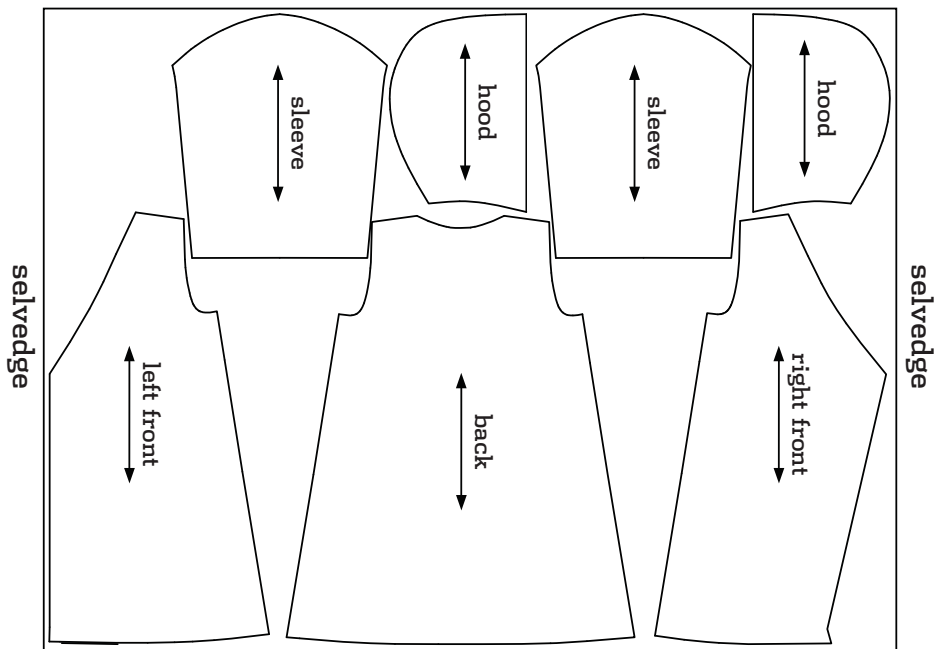


SIZE CHART	CHEST	CBLENGTH
	2T-4T	11-13" (28-32 cm)
5-6	13-16" (32-40.5 cm)	27½" (71 cm)
Sleeve Length (Unrolled)	14" (35.5 cm)	16" (40.5 cm)
Shown in size 2T-4T.		

60" (152.5 cm)

main

5-6



**Note:** Please refer to the updated Step 9 below, instead of the one printed in the magazine.

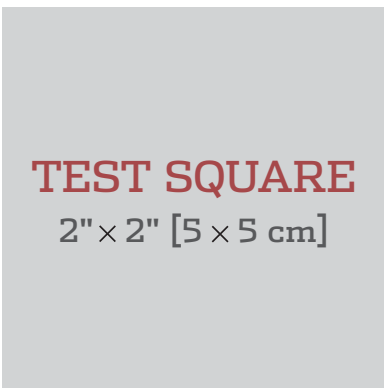
**8** On the assembled robe body, fold  $\frac{1}{4}$ " (6 mm) to the wrong side around the neckline between the pattern dots and press.



**GETTING STARTED** Basic techniques and terms you'll need to know for the pattern you have downloaded.

## ASSEMBLING FULL-SIZE PATTERN PRINTOUT

**1** | When preparing to print the PDF, make sure that you are printing it at 100% and that there is no scaling. Check the settings for page scaling (should be "None") and check the preview to make sure that you will be printing at full size. Make sure that the box labeled "Auto-Rotate and Center" is unchecked (instructions apply specifically to Adobe Reader; if using another PDF reader, check for similar settings).



**2** | To ensure that the pattern has printed at the correct scale, check the size of the TEST SQUARE. The Test Square should be 2" x 2" (5 x 5 cm).

**3** | To begin assembling the pattern, cut off or fold the dotted margin around each page.

**4** | The pages are numbered in rows, so the first row of pages is numbered 1a, 1b, 1c, etc. Line up the rows and match the dotted lines together so they overlap. Tape the pages together. Use the illustrated guide to match each piece. Once the pattern is complete, find your size, pin the pattern to the fabric, and follow the coordinating line to cut out or trace the pattern.

## LAYOUT, MARKING + CUTTING GUIDELINES

**1** | Find the lines that correspond to your size and trace the pattern pieces, either on tissue paper or directly onto the fabric, using tracing paper and a tracing wheel.

**2** | If you are cutting pattern pieces on the fold or cutting two of the same pattern piece, fold the fabric in half, selvedge to selvedge, with right sides together. Note that this technique is not appropriate for some fabrics, so check the project instructions if you are unsure.

**3** | Lay the pattern pieces on the fabric as close together as possible. Double-check that all pattern pieces to be cut "on the fold" are placed on the fold.

**4** | Make sure all pattern pieces are placed on the fabric with the grainline running parallel to the lengthwise grain unless a crosswise or bias grainline is present.

**5** | Copy all pattern markings onto the wrong side of the fabric unless otherwise noted.

**6** | Read through all cutting instructions listed in the project instructions for directions on how many pattern pieces to cut out of your fabric and interfacing.

**7** | Use weights to hold the pattern pieces down and use pins to secure the corners as needed.

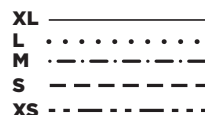
**8** | Cut the pieces slowly and carefully.

## PATTERN SYMBOLS + MARKINGS



### BUTTON + BUTTONHOLE

**PLACEMENT MARKS** Solid lines indicate buttonholes. A large open circle is the button symbol and shows placement.



### CUTTING LINES

Multisize patterns have different cutting lines for each size.



### PLACE ON FOLD BRACKET

This is a grainline marking with arrows pointing to the edge of the pattern. Place on the fold of the fabric so that your finished piece will be twice the size of the pattern piece, without adding a seam.

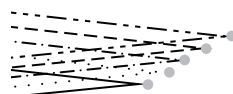


### GRAINLINE

The double-ended arrow should be parallel to the lengthwise grain or fold unless specifically marked as crosswise. Bias grainlines will be diagonal.



**NOTCHES** Notches are triangle-shaped symbols used for accurately matching seams. Pieces to be joined will have corresponding notches.



### DARTS

Lines and dots mark darts. The lines show where the stitching will be, and the dot shows the position of the dart point (signaling the point, at the end of the dart, where your stitching should end).



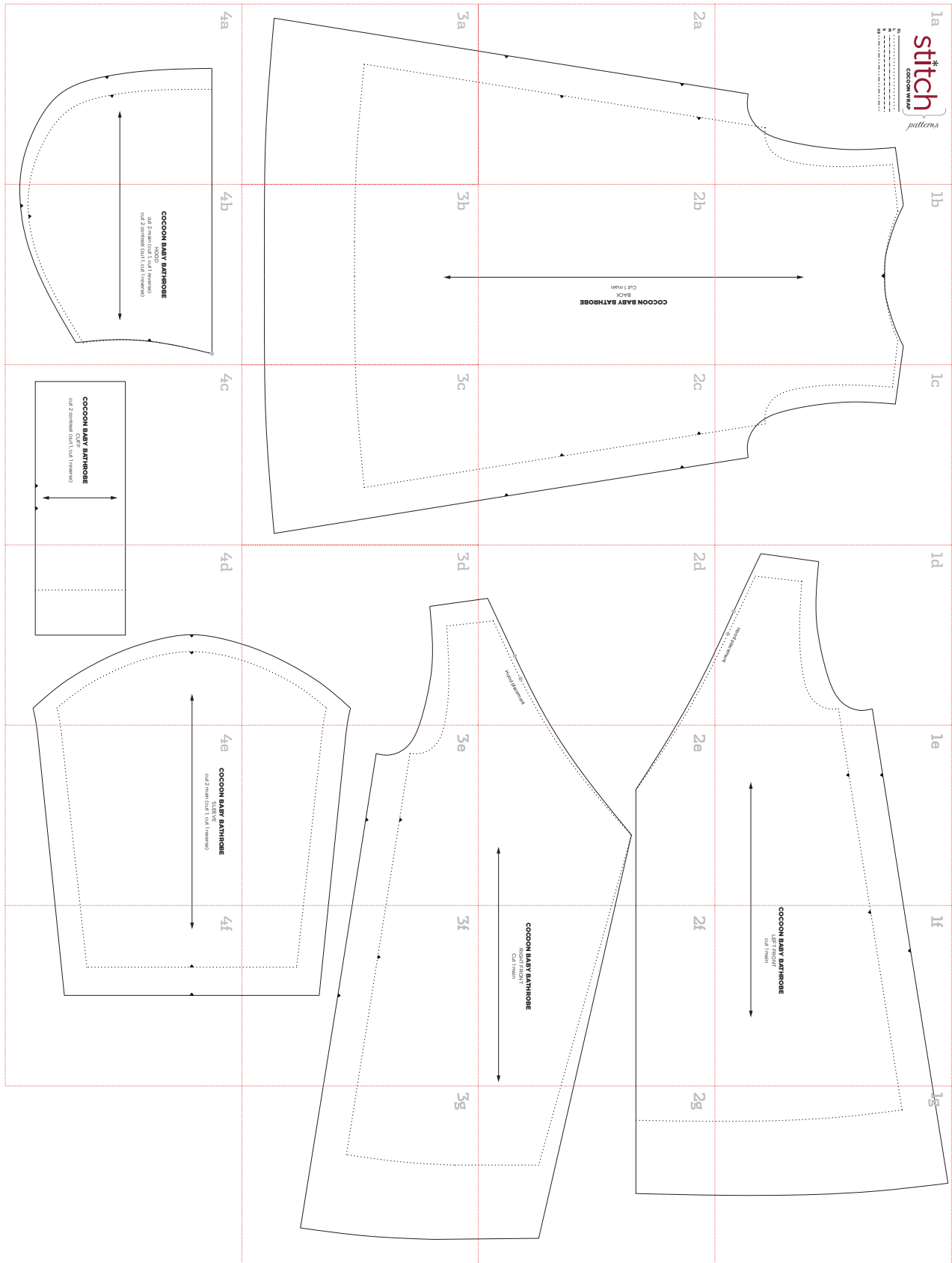
### PATTERN DOTS

Filled circles indicate that a mark needs to be made (often on the right side of the fabric) for placement of elements such as a pocket or a dart point. Mark by punching through the pattern paper only, then mark on the fabric through the hole.



### SLASH MARKS

A dashed line (sometimes appearing with pattern dots) indicates an area to be slashed. Further instructions for making the slash will be included in the pattern instructions.



1a

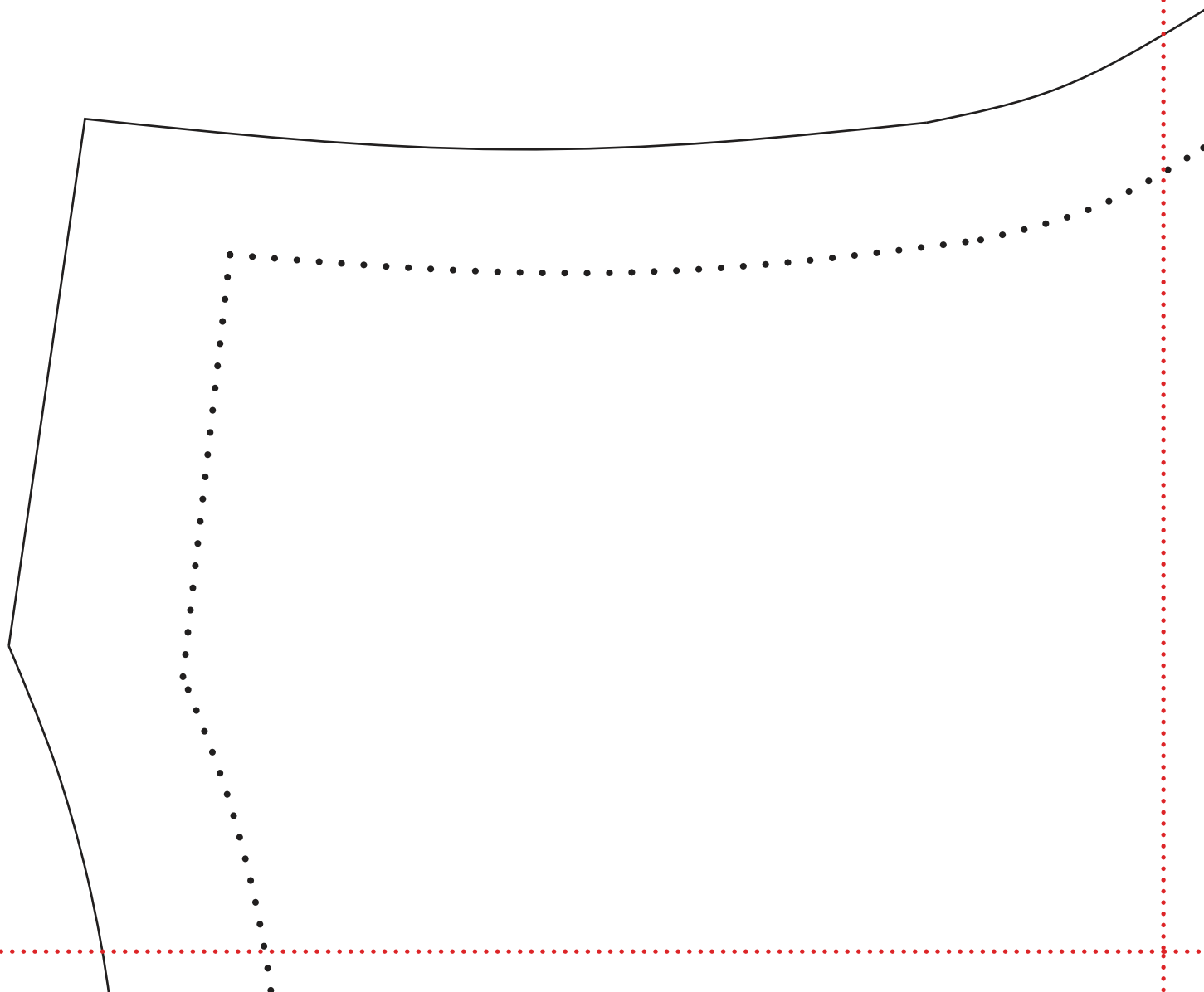
# stitch

COZY WRAP BATHROBE

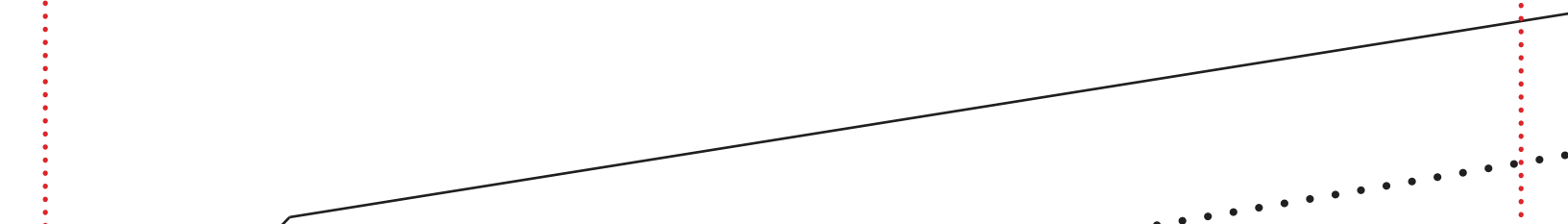
*patterns*

5-6

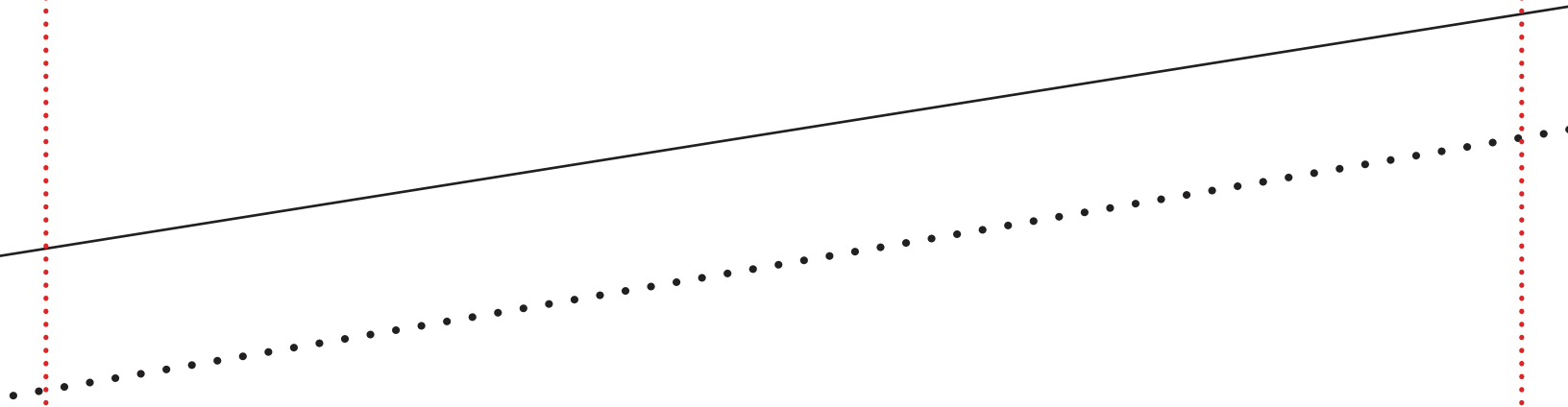
2T-4T . . . . .



1b

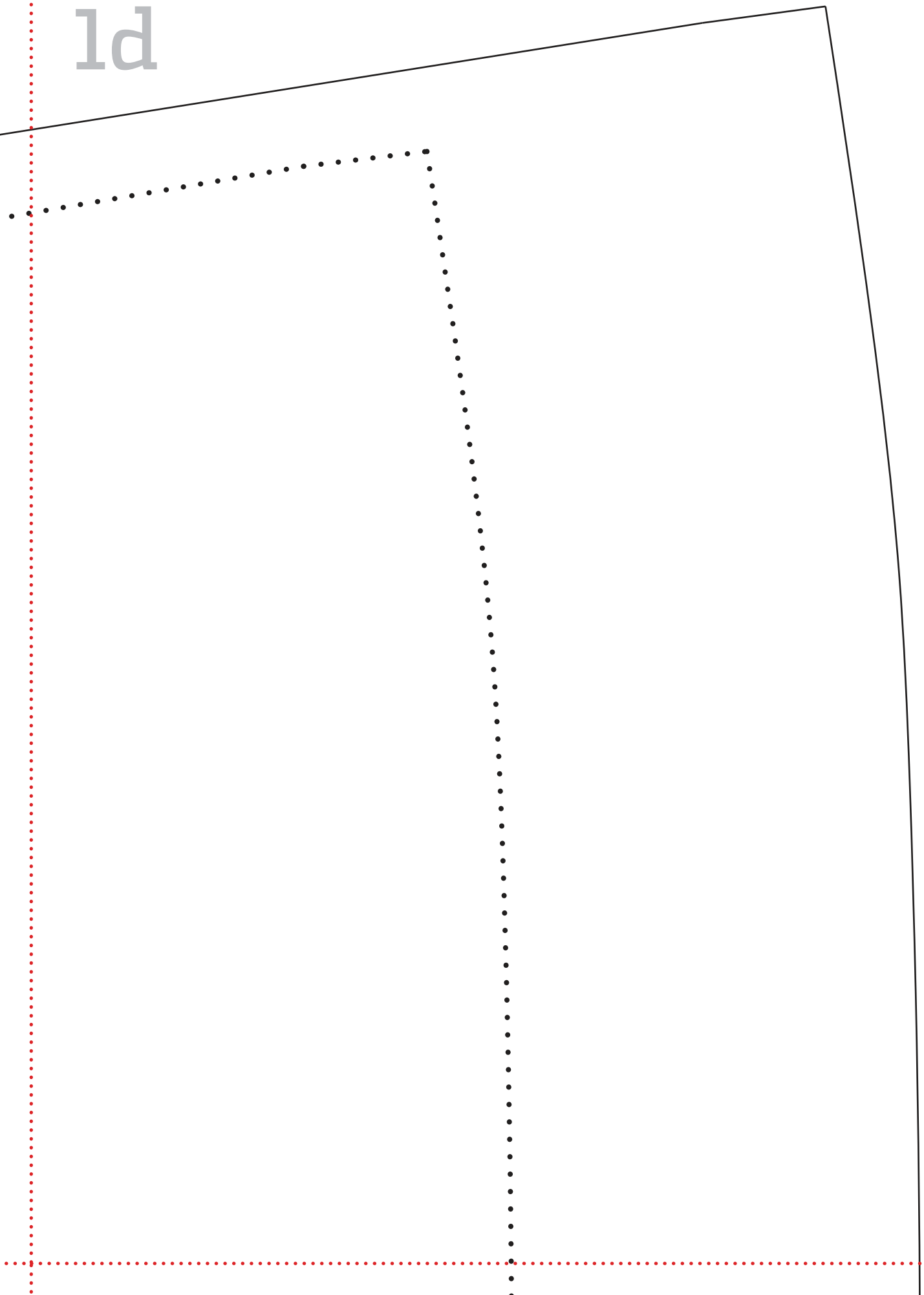


lc

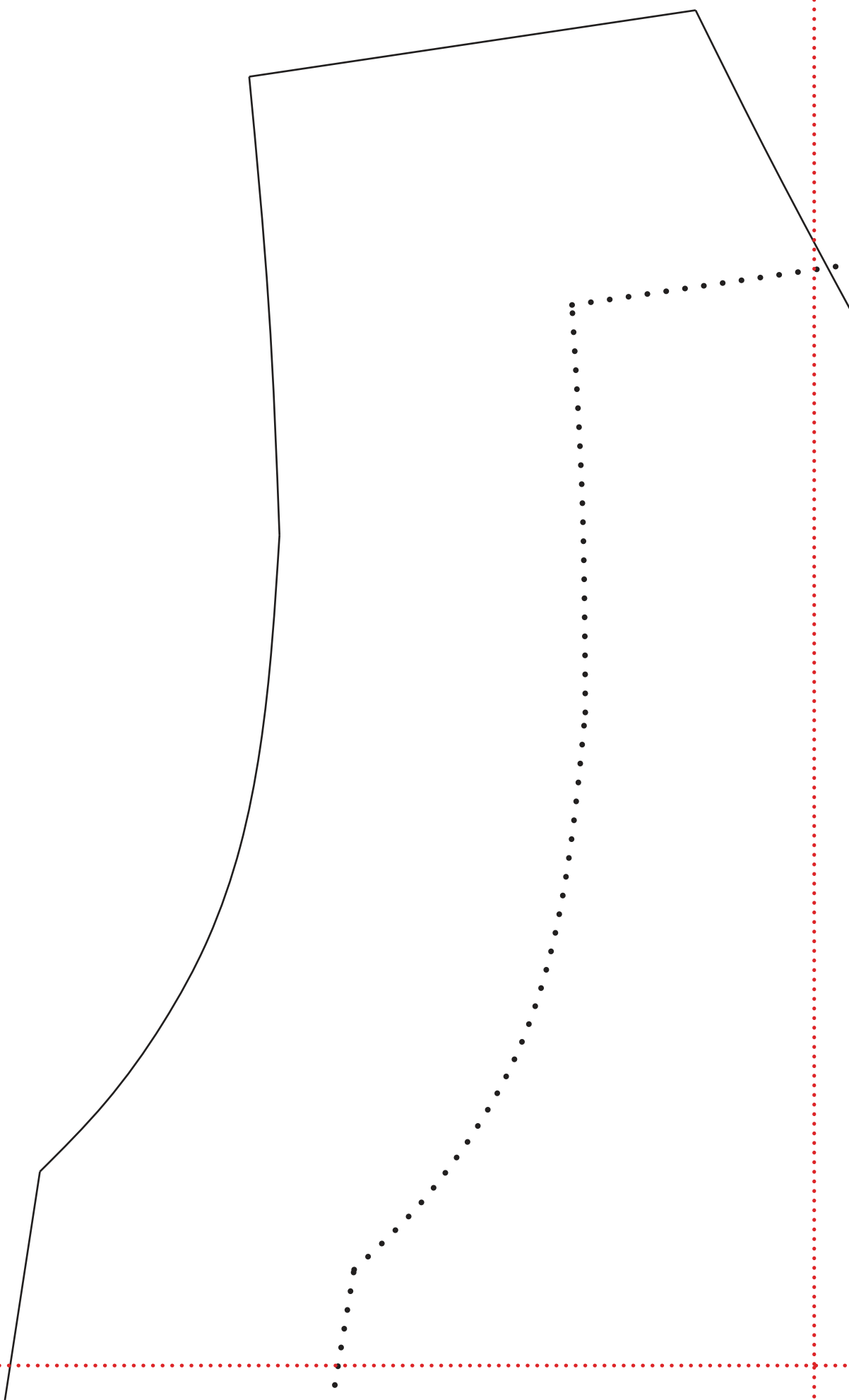




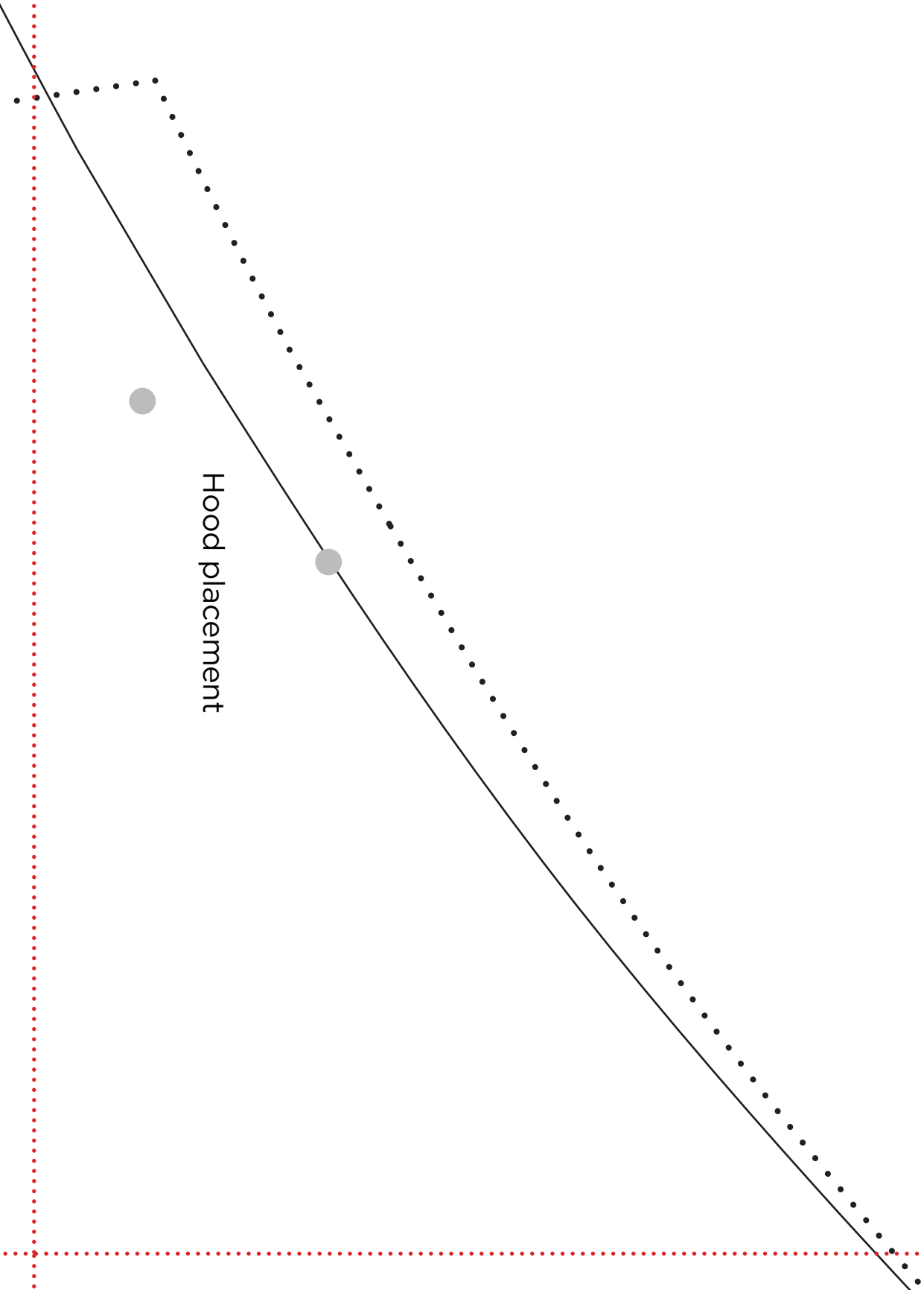
1d



1e

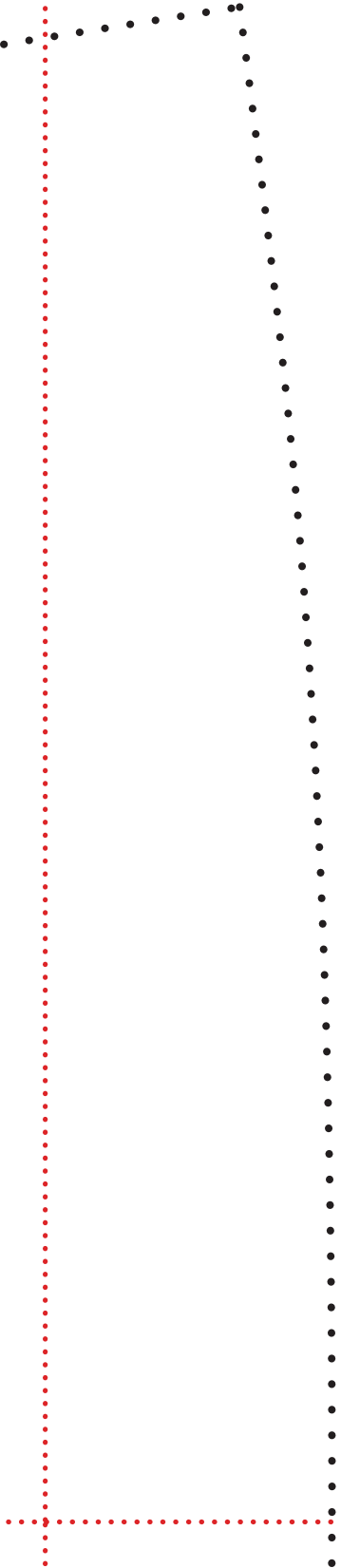


lf

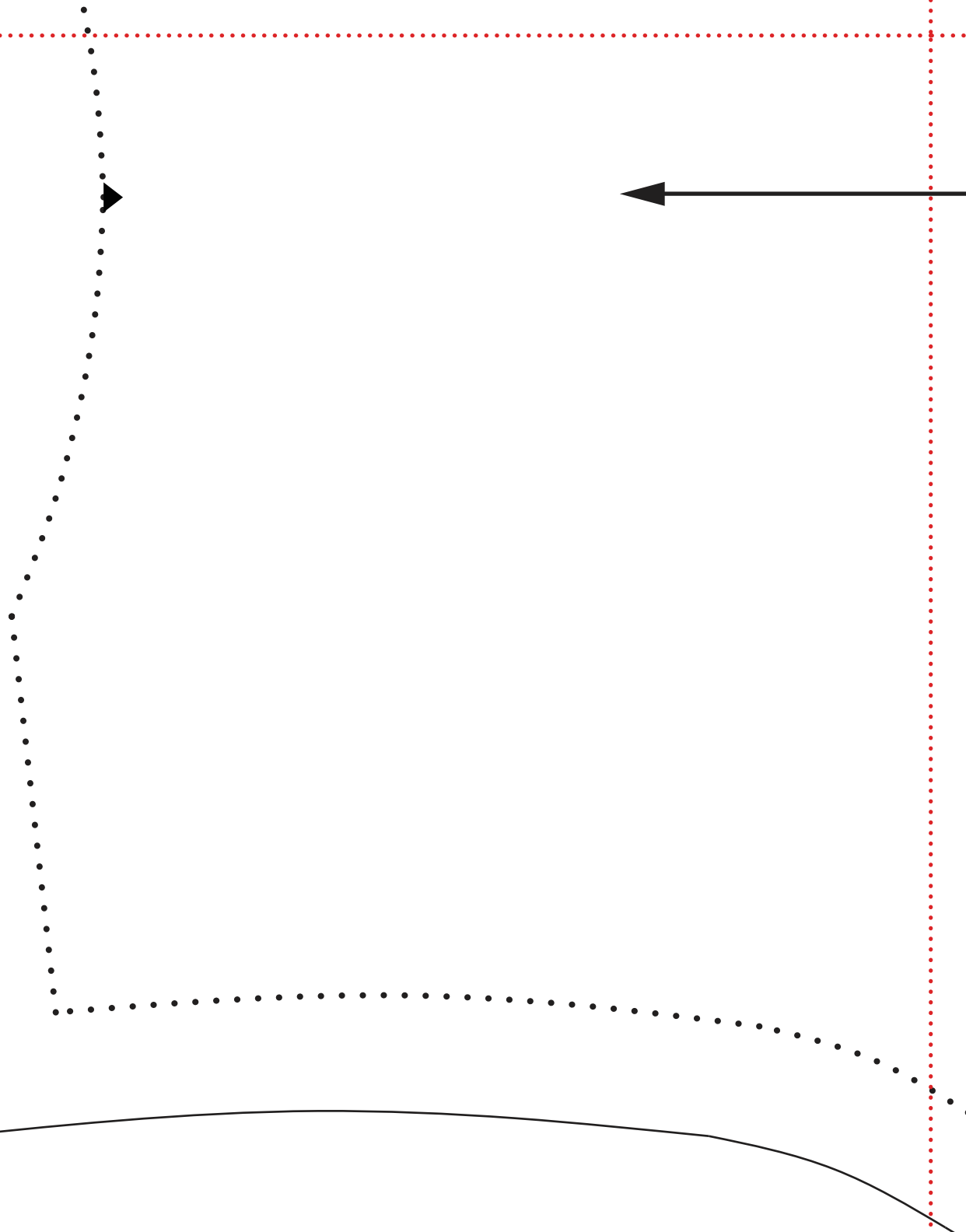


Hood placement

lg



2a

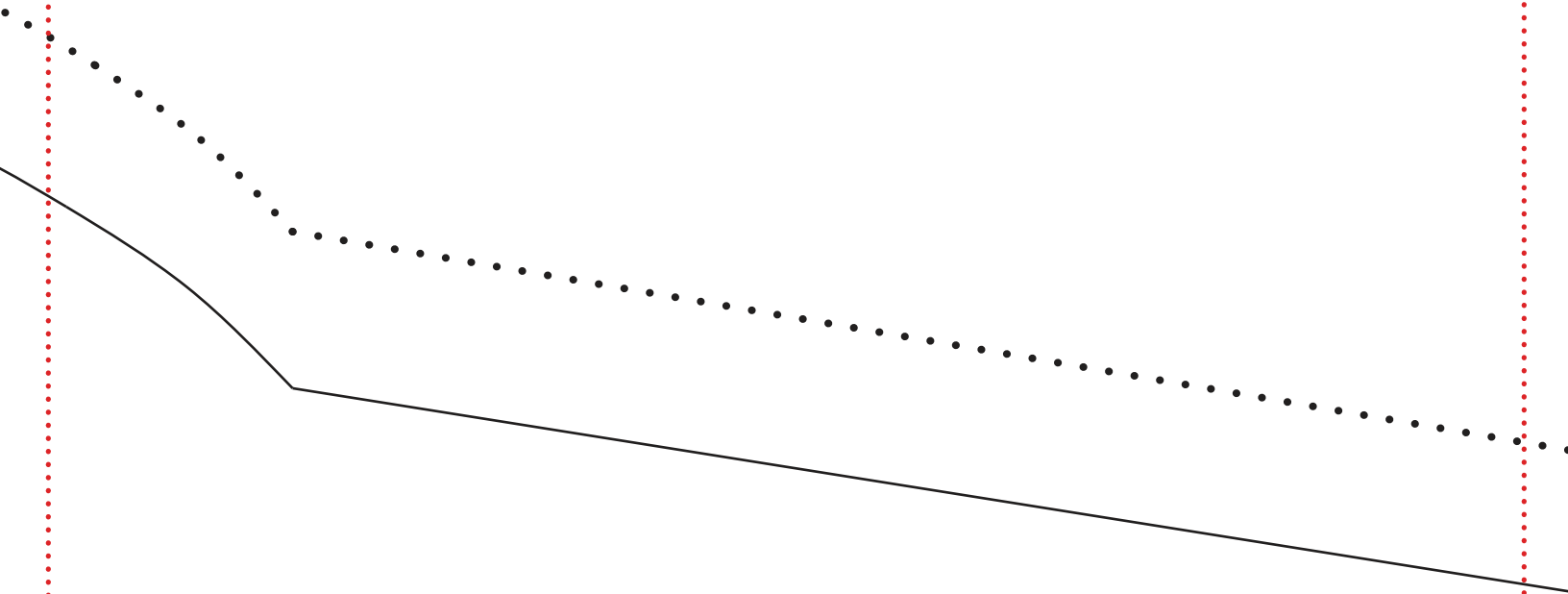


2b

**COZY WRAP BATHROBE**

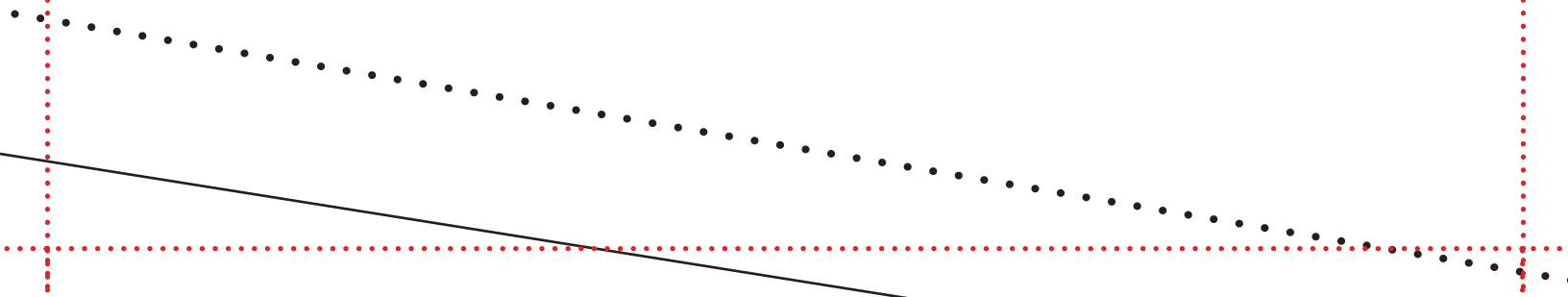
BACK

Cut 1 main

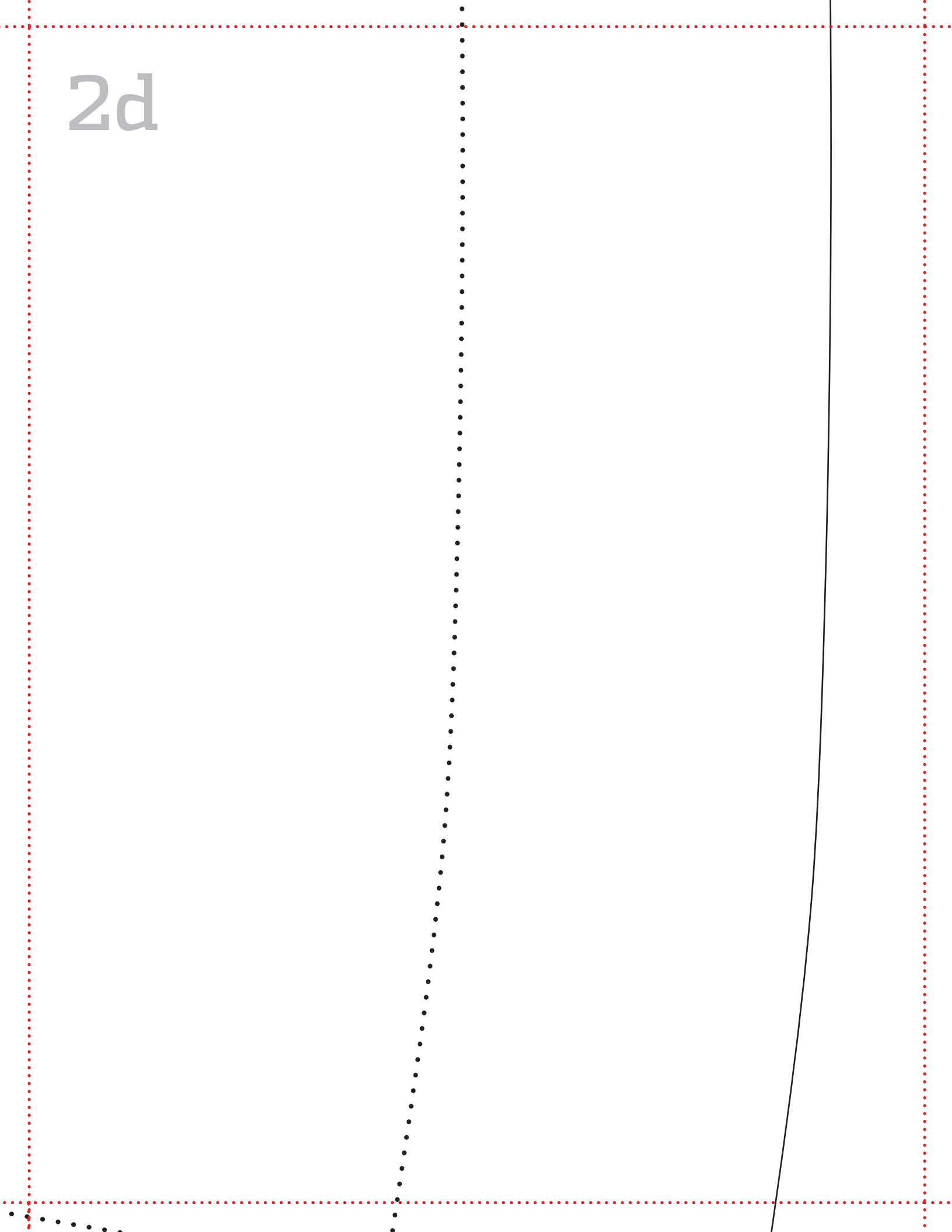




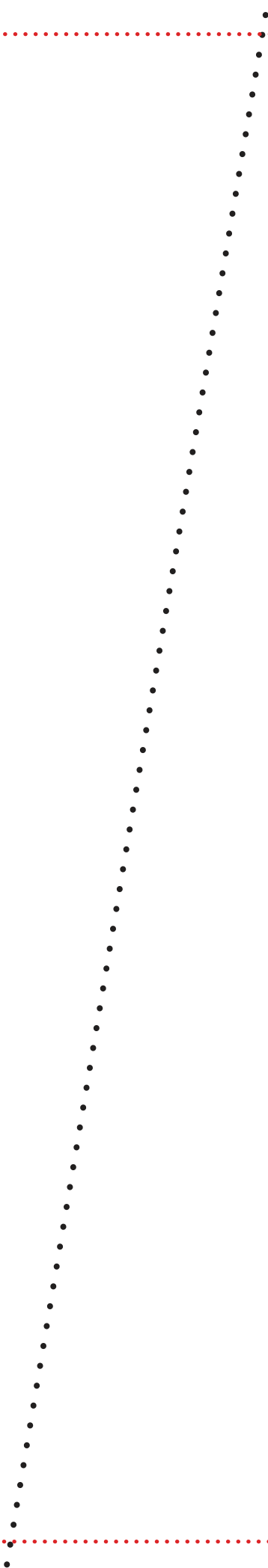
$2c$

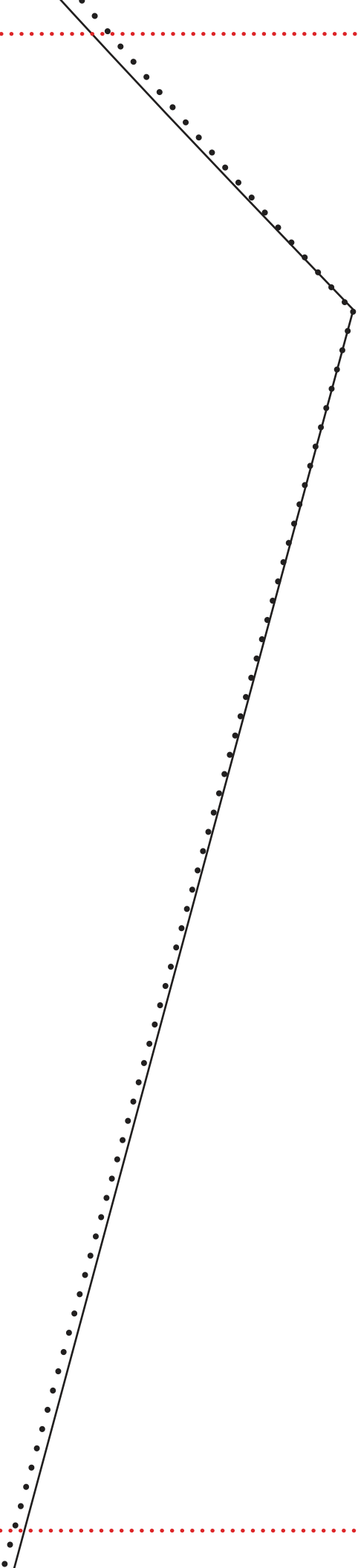


2d



2e



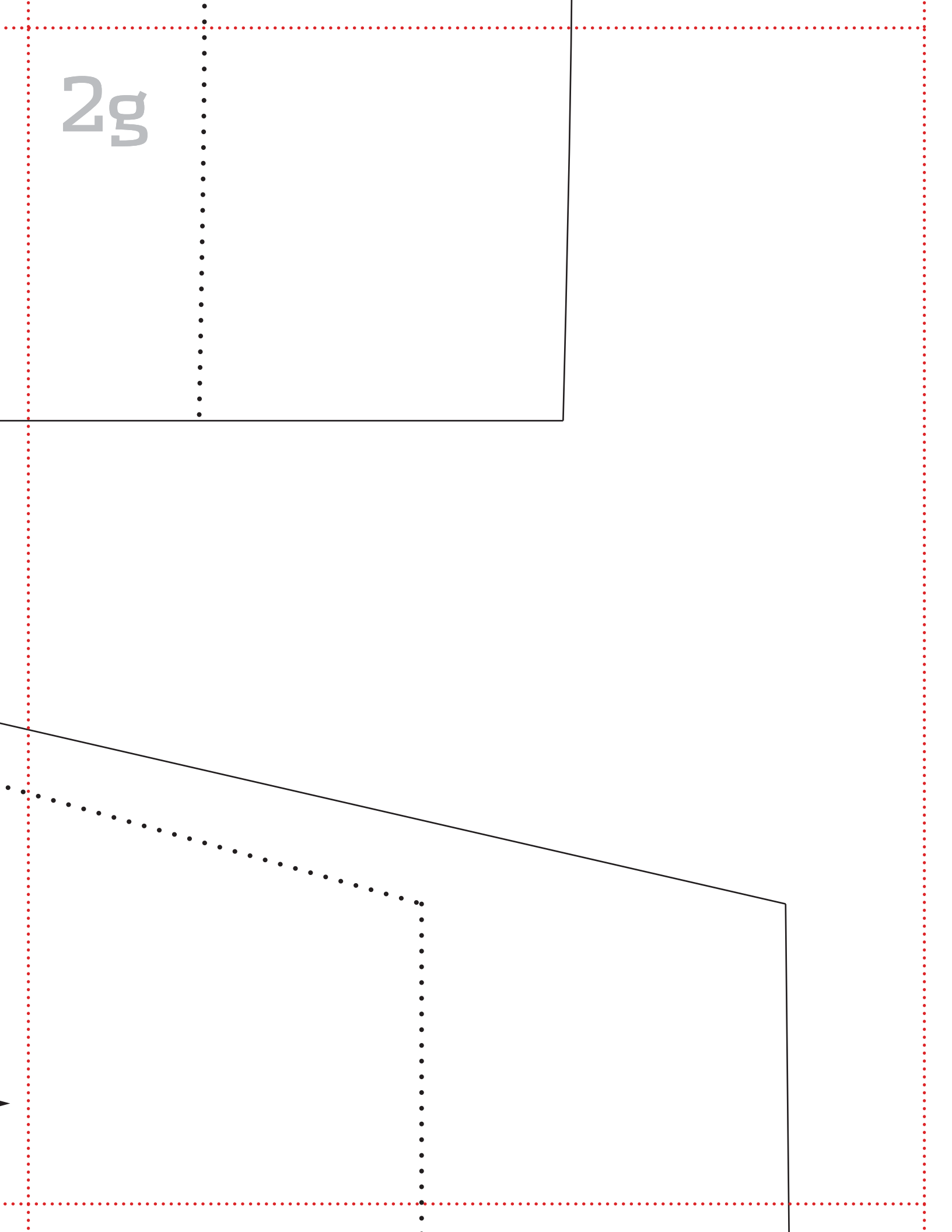


**COZY WRAP BATHROBE**  
RIGHT FRONT  
Cut 1 main

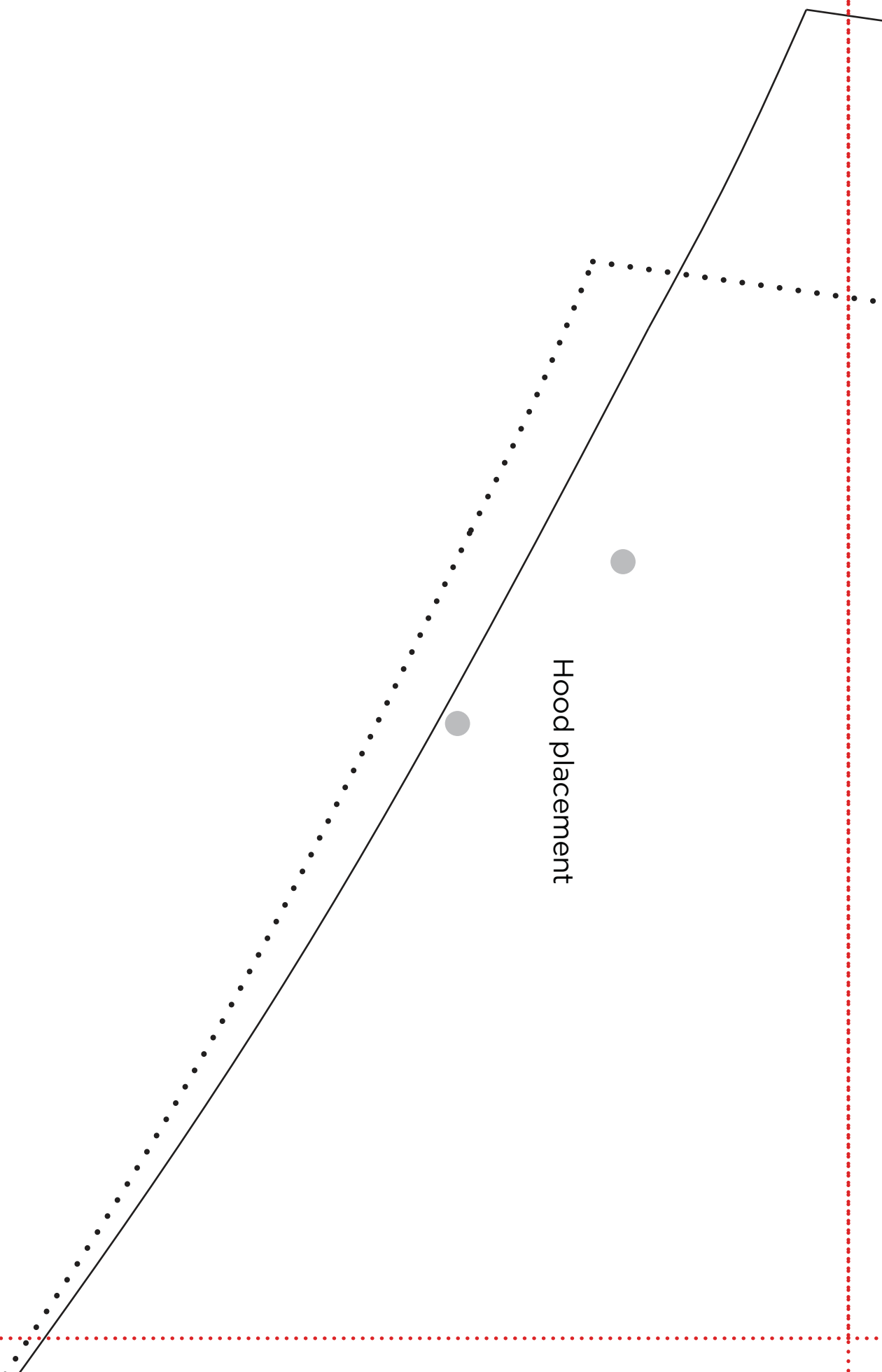
2f



2g

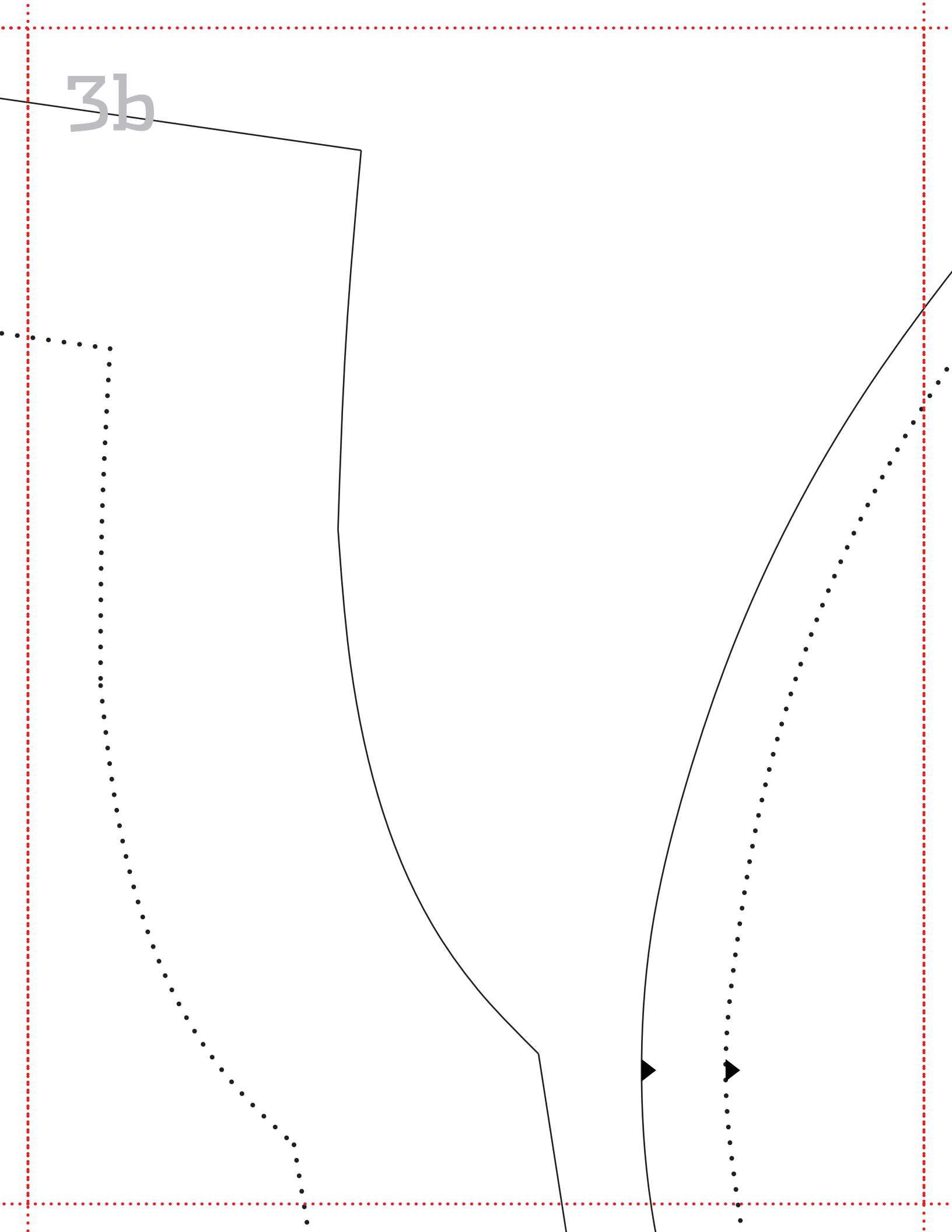


3a

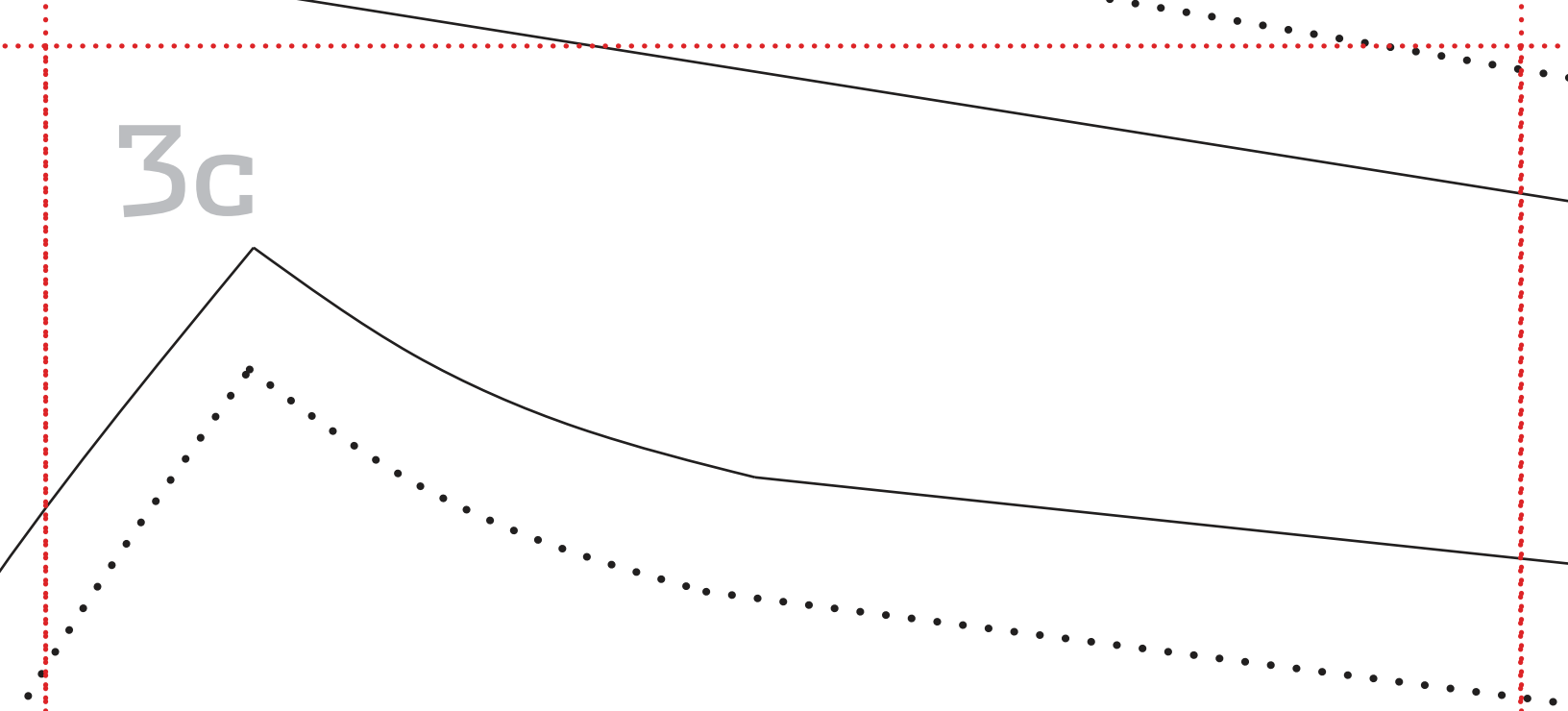




3b



3c



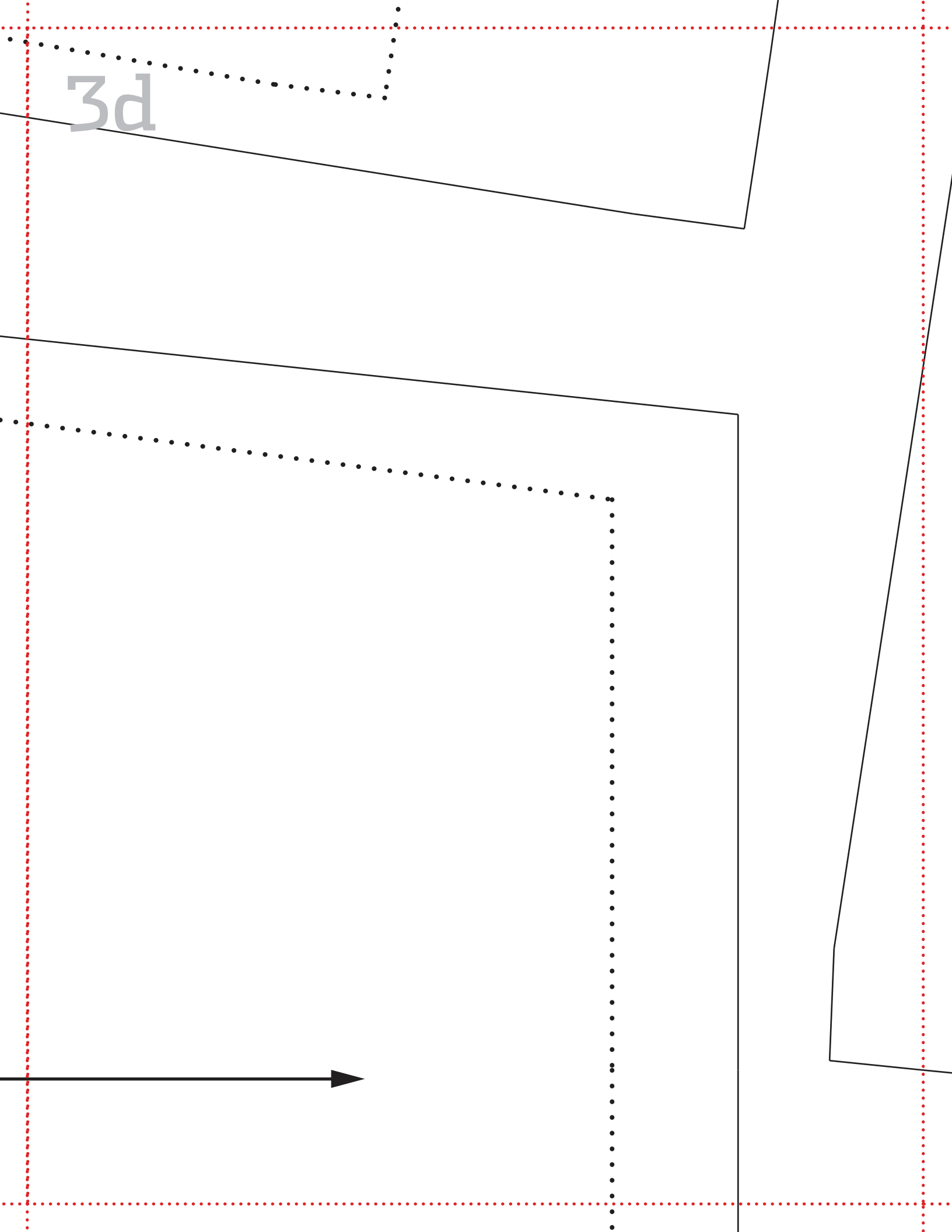
**COZY WRAP BATHROBE**

SLEEVE

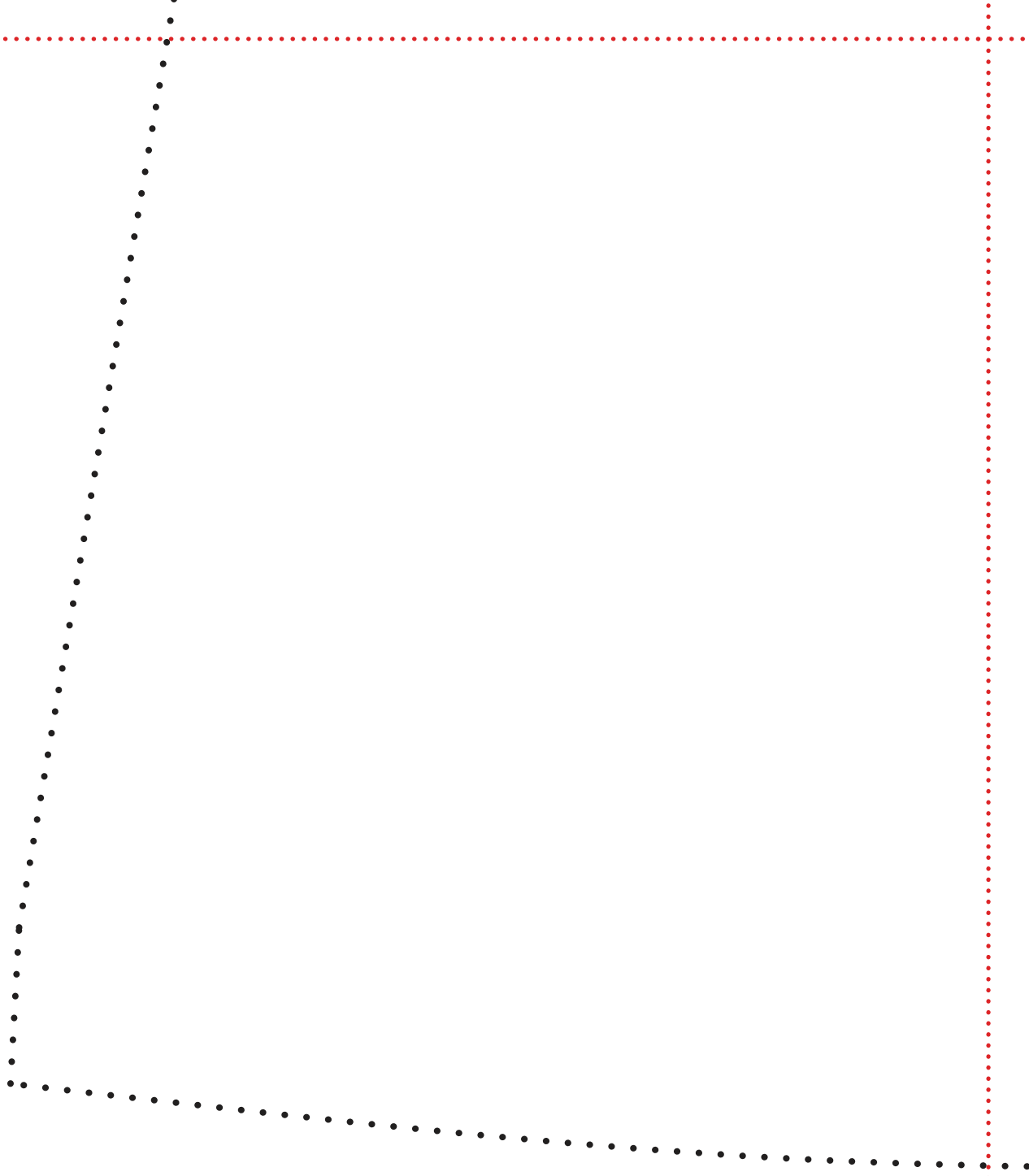
cut 2 (cut 1 main, cut 1 reverse)



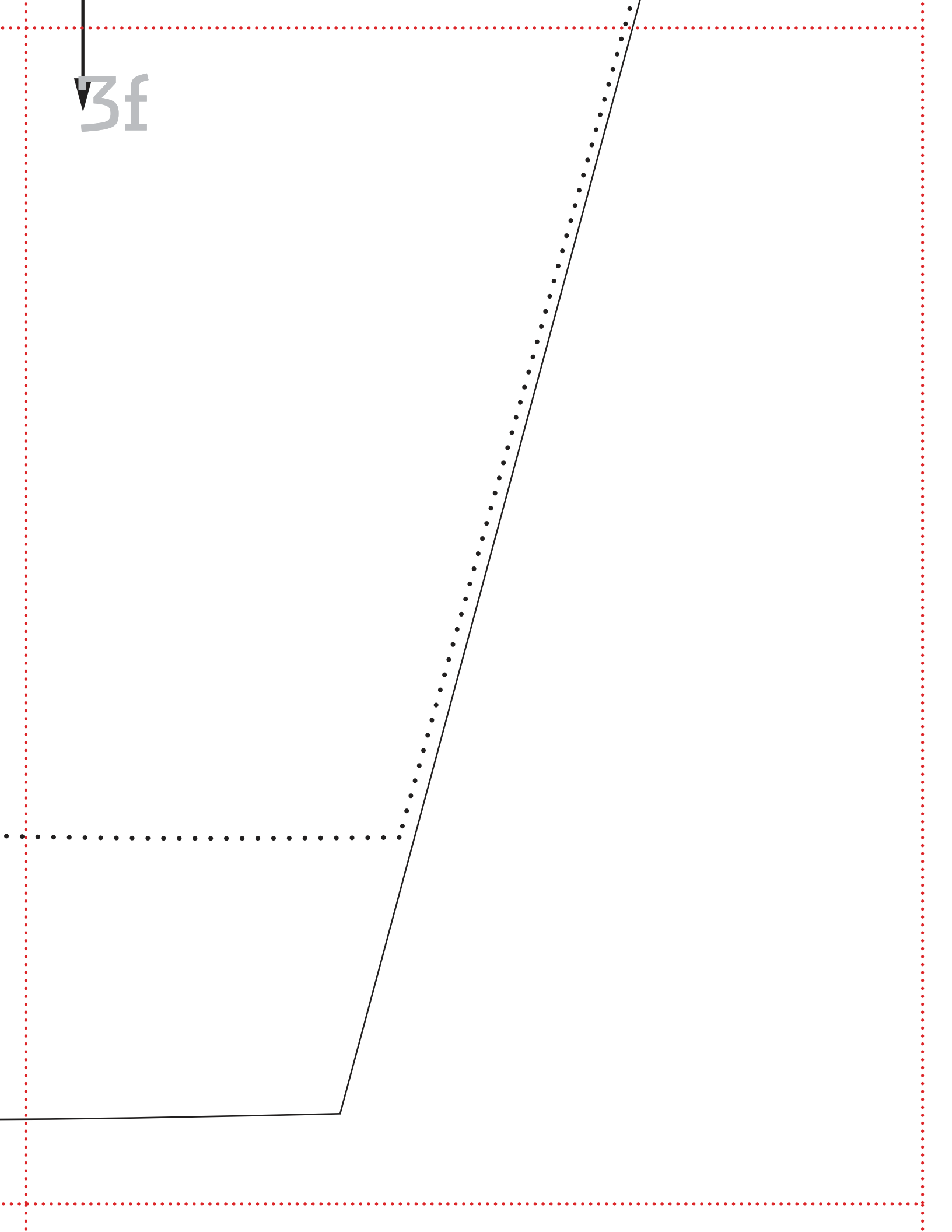
3d



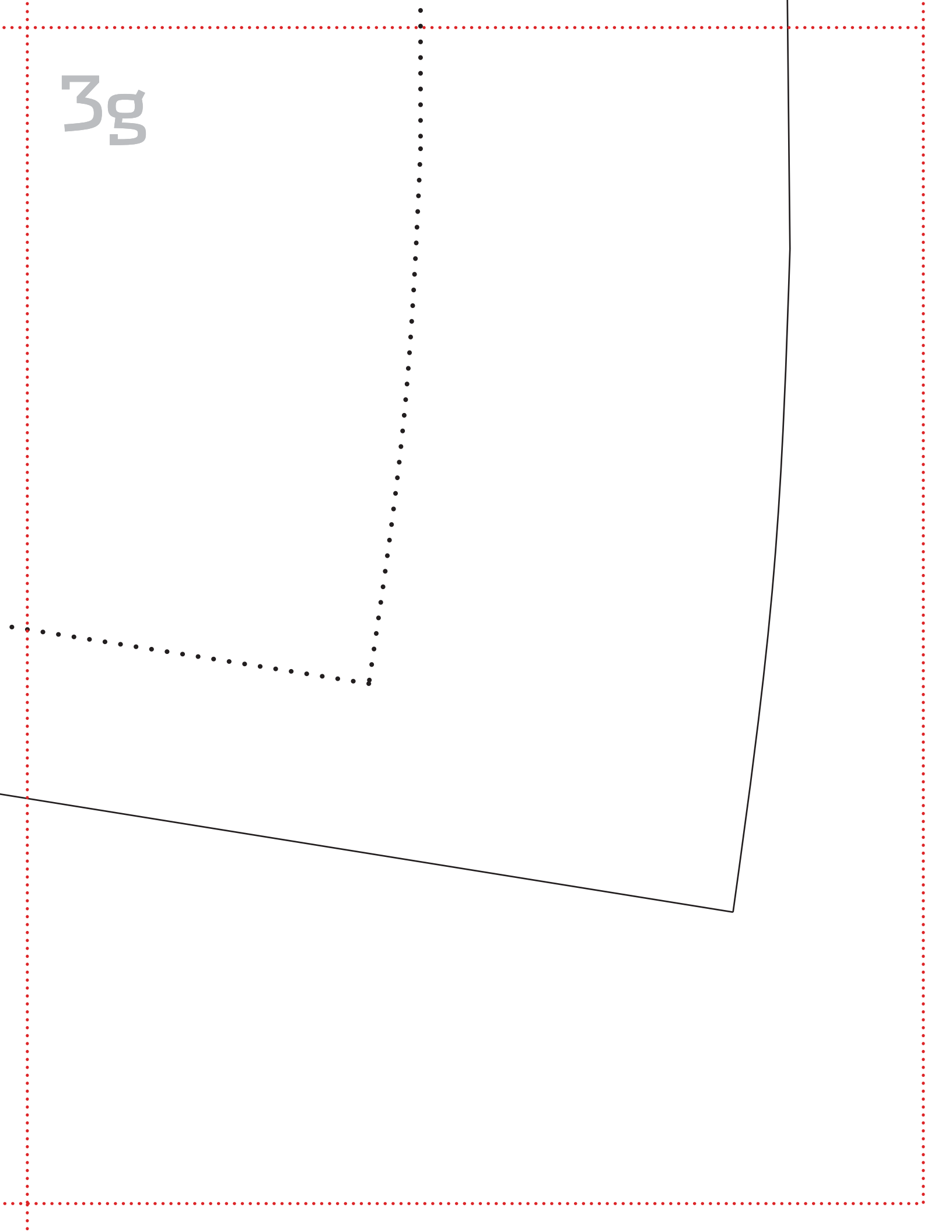
3e



3f



3g





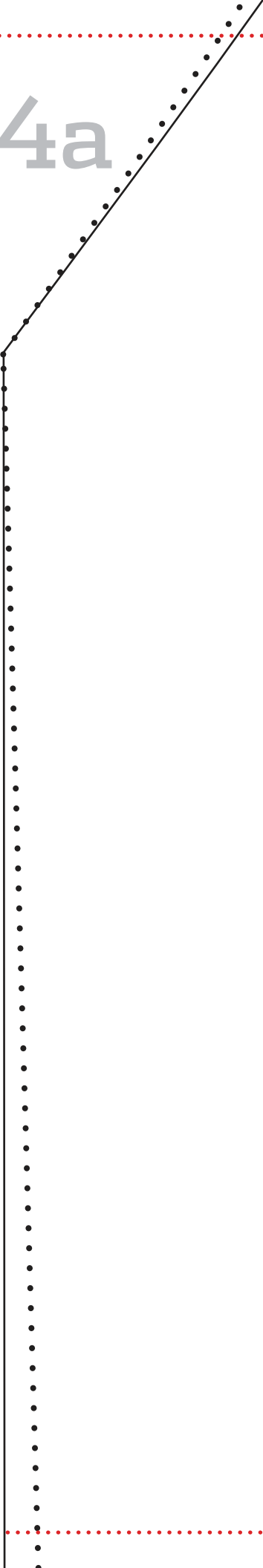
# COZY WRAP BATHROBE

LEFT FRONT

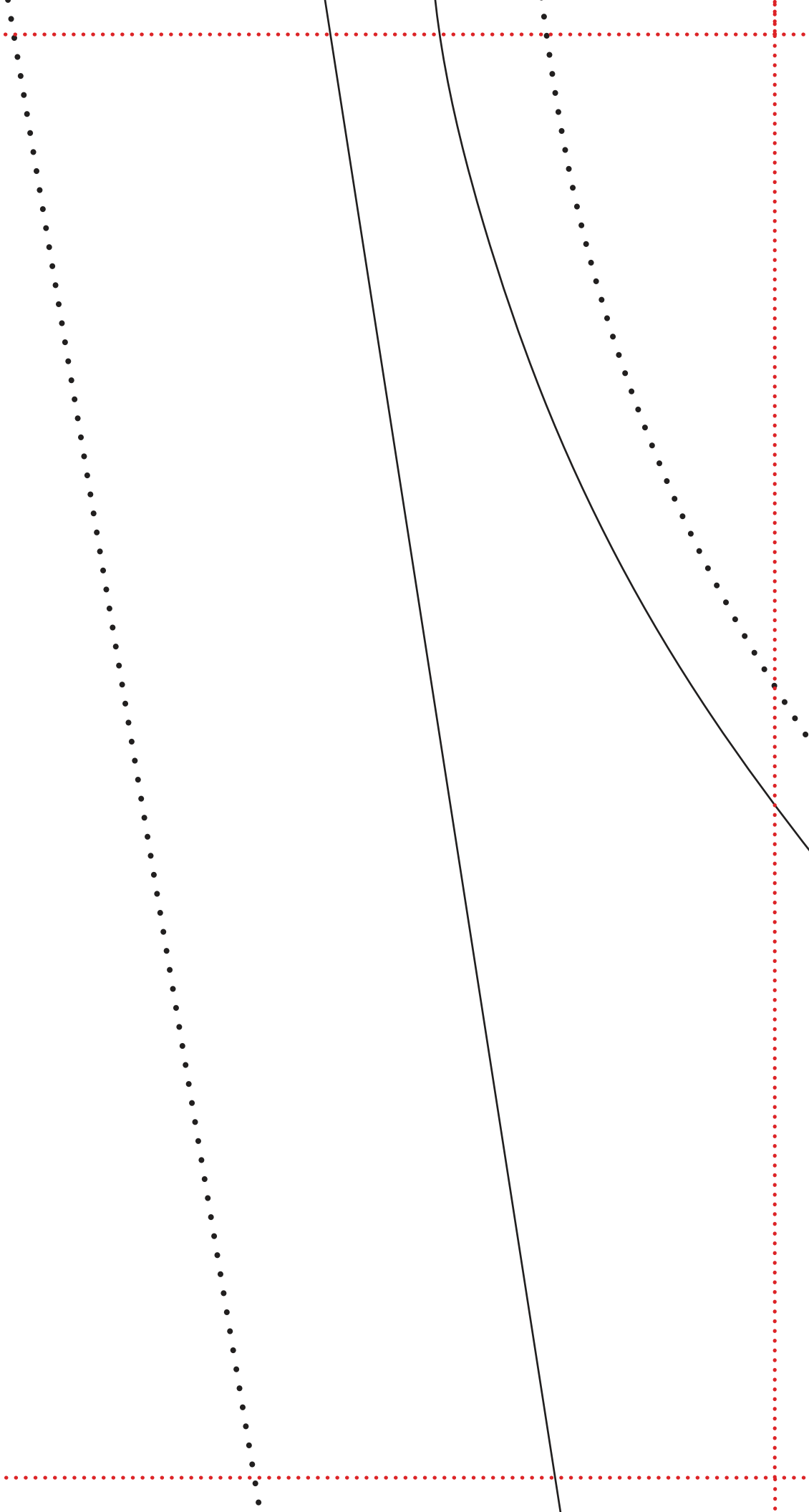
cut 1 main



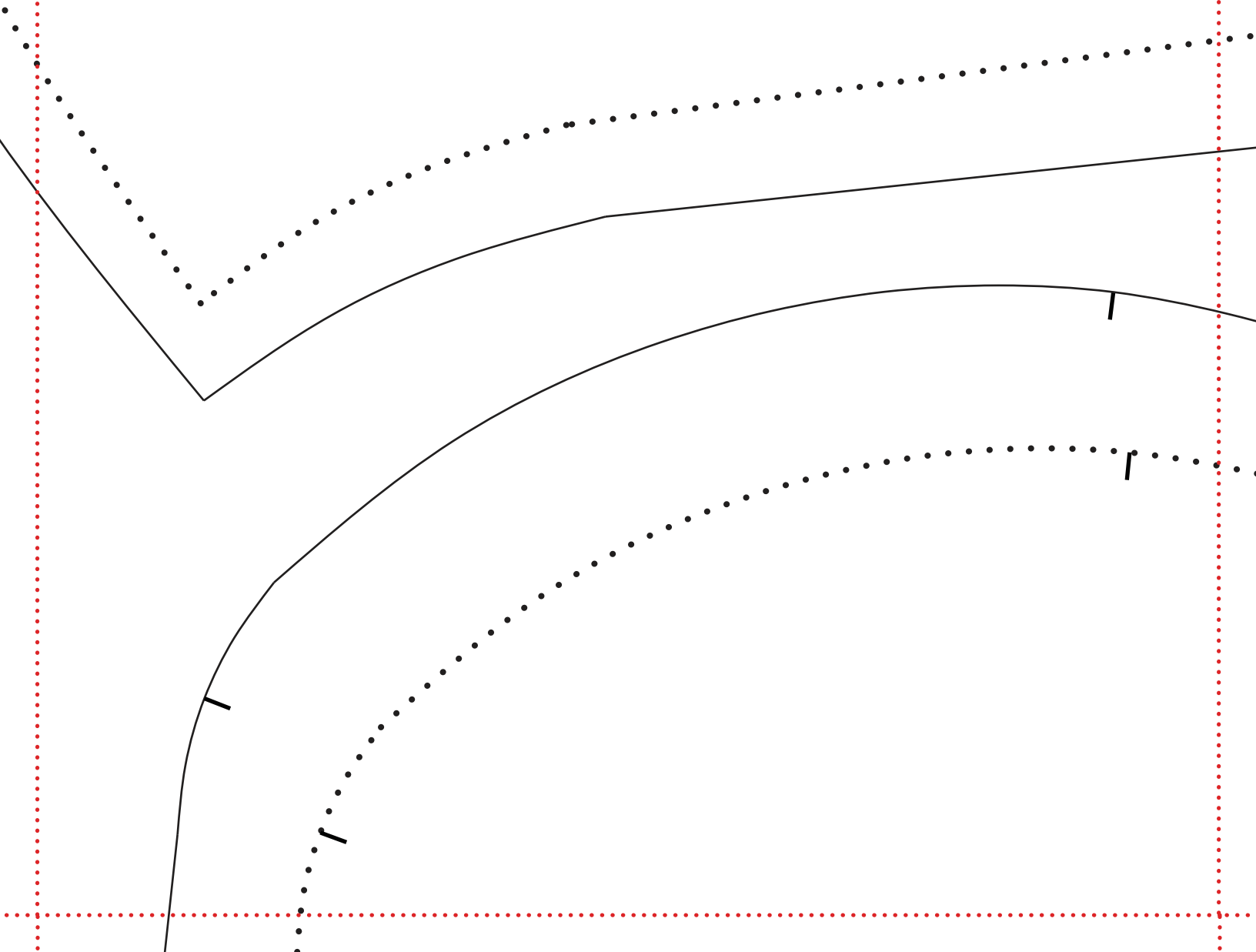
4a



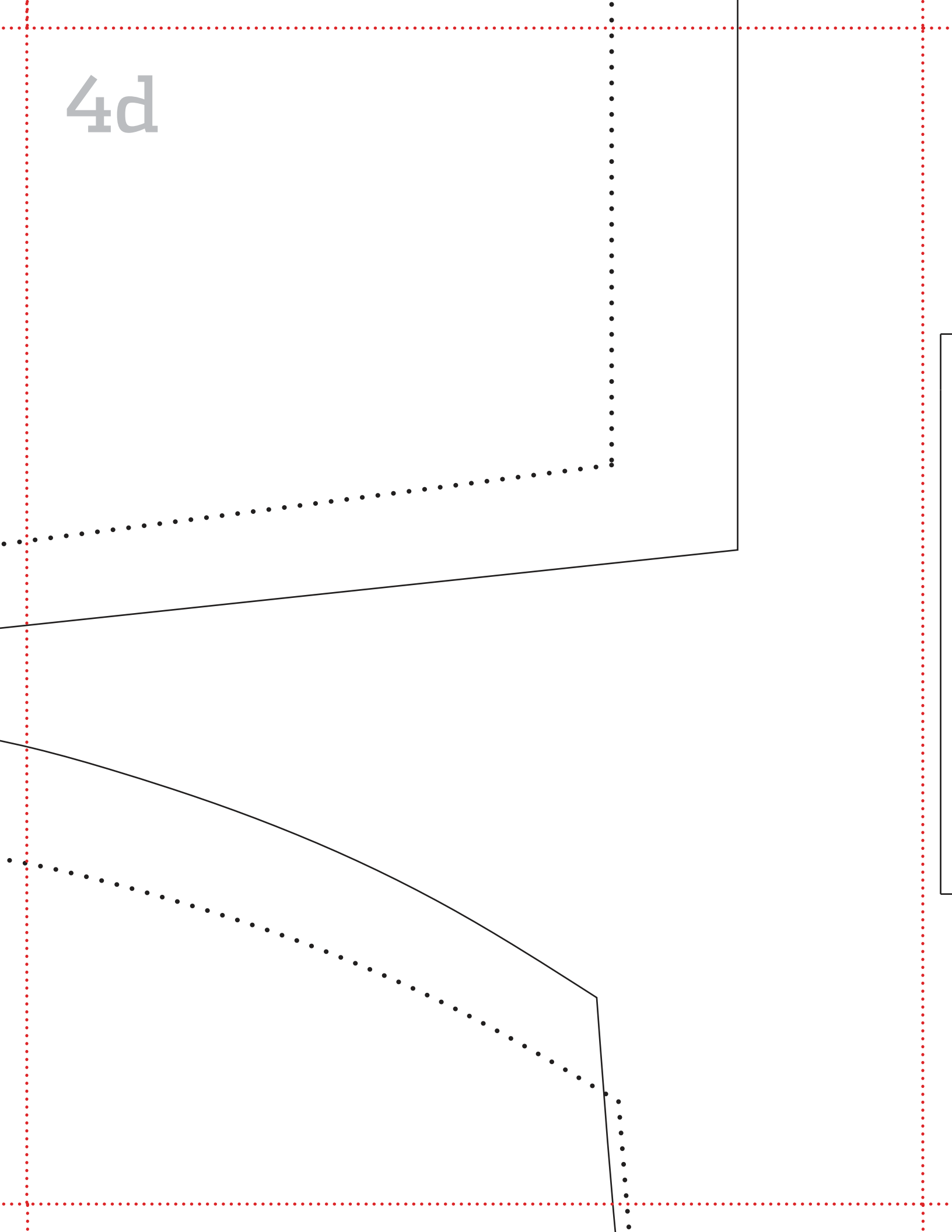
4b



4c



4d



4e



**COZY WRAP BATHROBE**

CUFF

cut 2 (cut 1 main, cut 1 reverse)



2T-4T

5-6



4f

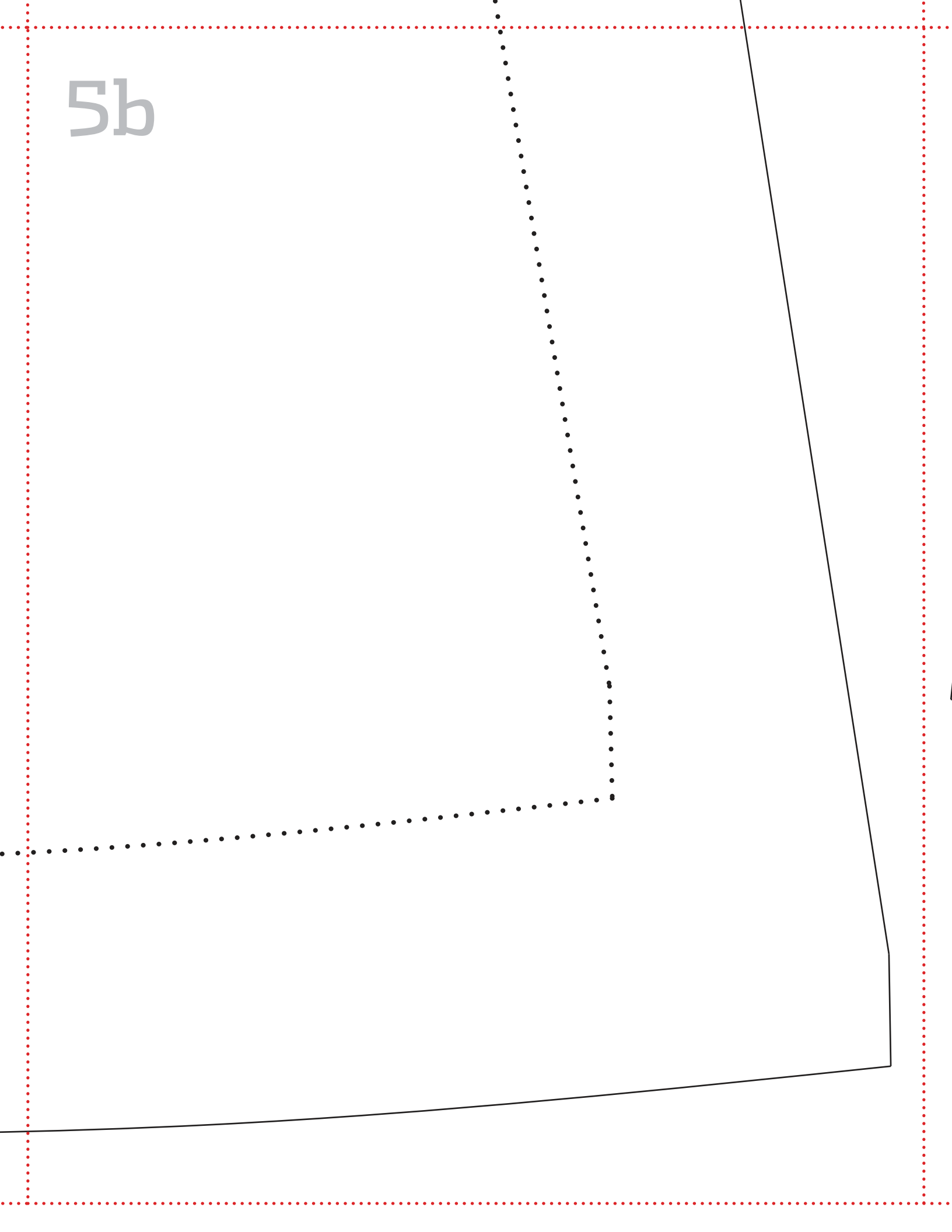




5a



5b



5c

# COZY WRAP BATHROBE

HOOD

cut 2 (cut 1 main, cut 1 reverse)

cut 2 contrast (cut 1 contrast, cut 1 reverse)



5d

